

OpenVPN for Windows Users

In order to provide secure access to the TeideHPC infrastructure, all communications will be through a virtual private network (VPN).

Users will receive an email with the configuration files and access credentials encrypted with their GPG public password.

Its content is as follows:

- Four files containing the client's certificates.
- One client.ovpn file containing the connection data
- One README.txt file with the access credentials.

■ We remember the keys and access files to the VPN and the username and password are personal and non-transferable and only one simultaneous connections is allowed."

Download and install

Although Windows 10 and Windows 11 has its own VPN client that could be used, we recommend OpenVPN version 3.

Download OpenVPN version 3 clicking in this [link](#).

Download OpenVPN Connect v3

sha256 signature: c001c26f0141d66409f91aca069b402f73913556ecc39156d0522922216809d7

For Windows 7, 8, 10, and 11.

A 32 bits version is also available:

Download OpenVPN Connect v3 for 32 bits

sha256 signature: c4cedee5eebc3c7d329b1efd071ac544feac50e4e4e94d9755f171cbd8b6d4d9

Previous generation OpenVPN Connect V2 is available here:

Download OpenVPN Connect v2.7.1

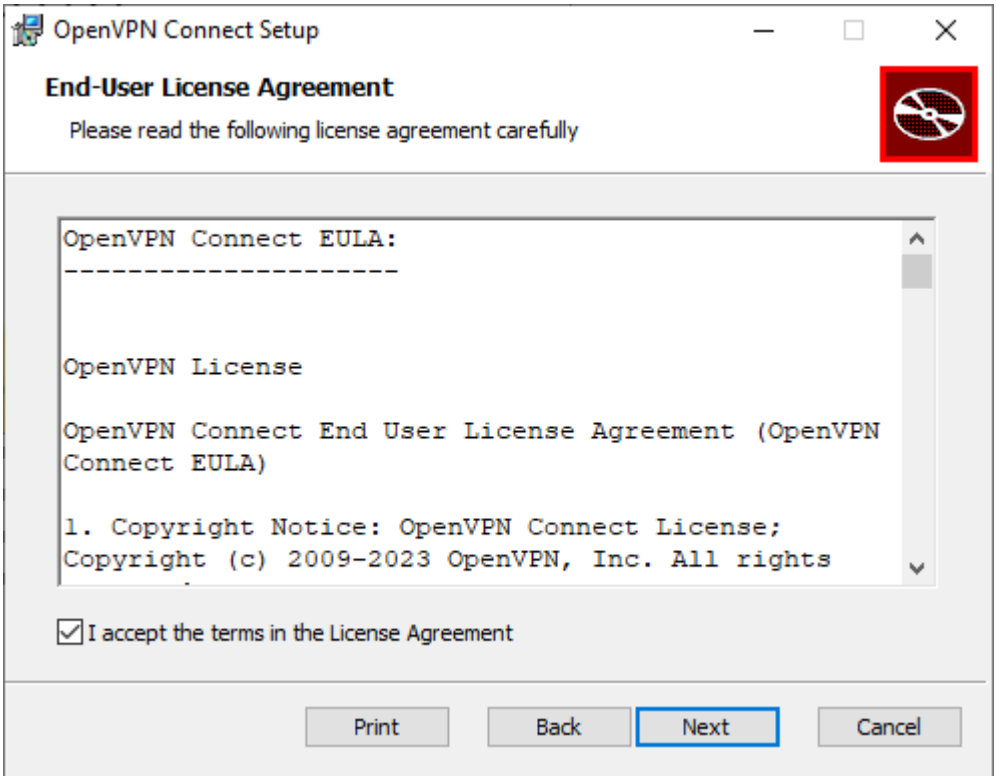
sha256 signature: f65dd0ea784dd63632be64f89b1f83d51c199fd7319888883780cb9e975c325a

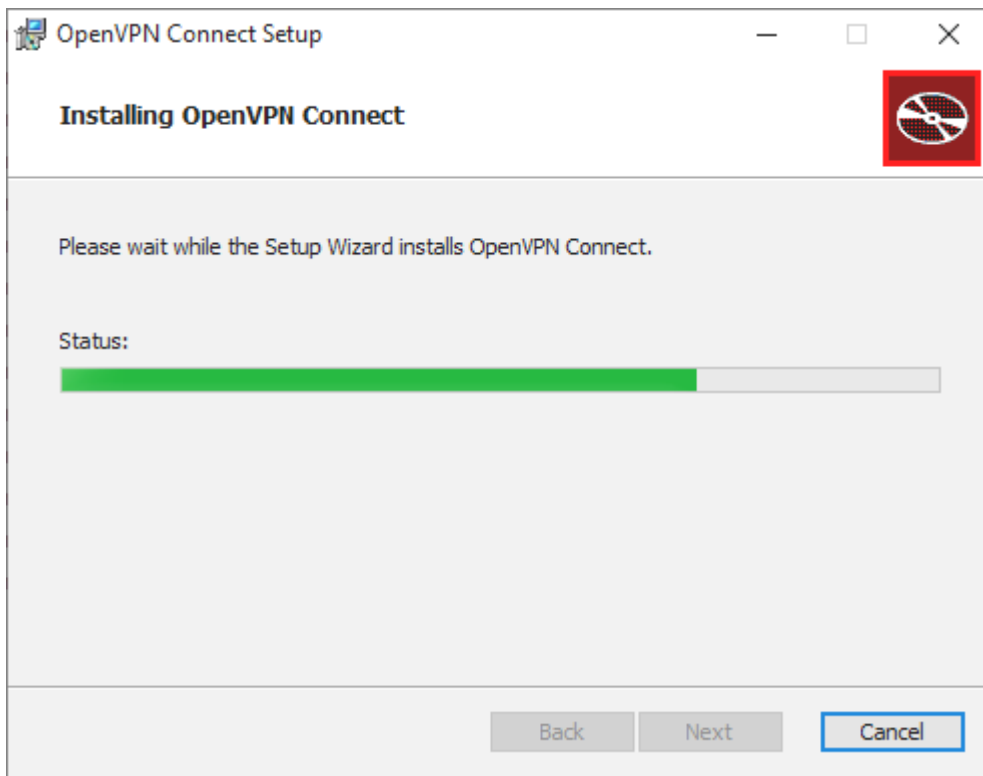
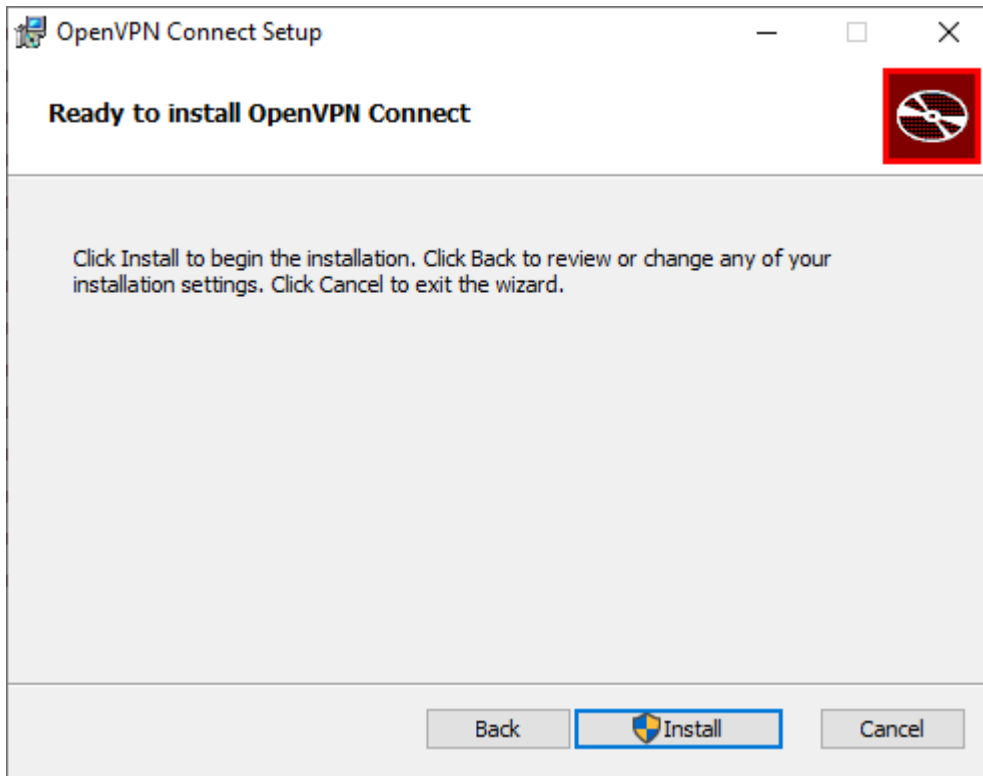
For Windows 7, 8, and 10.

Run downloaded file and you can see the wizard

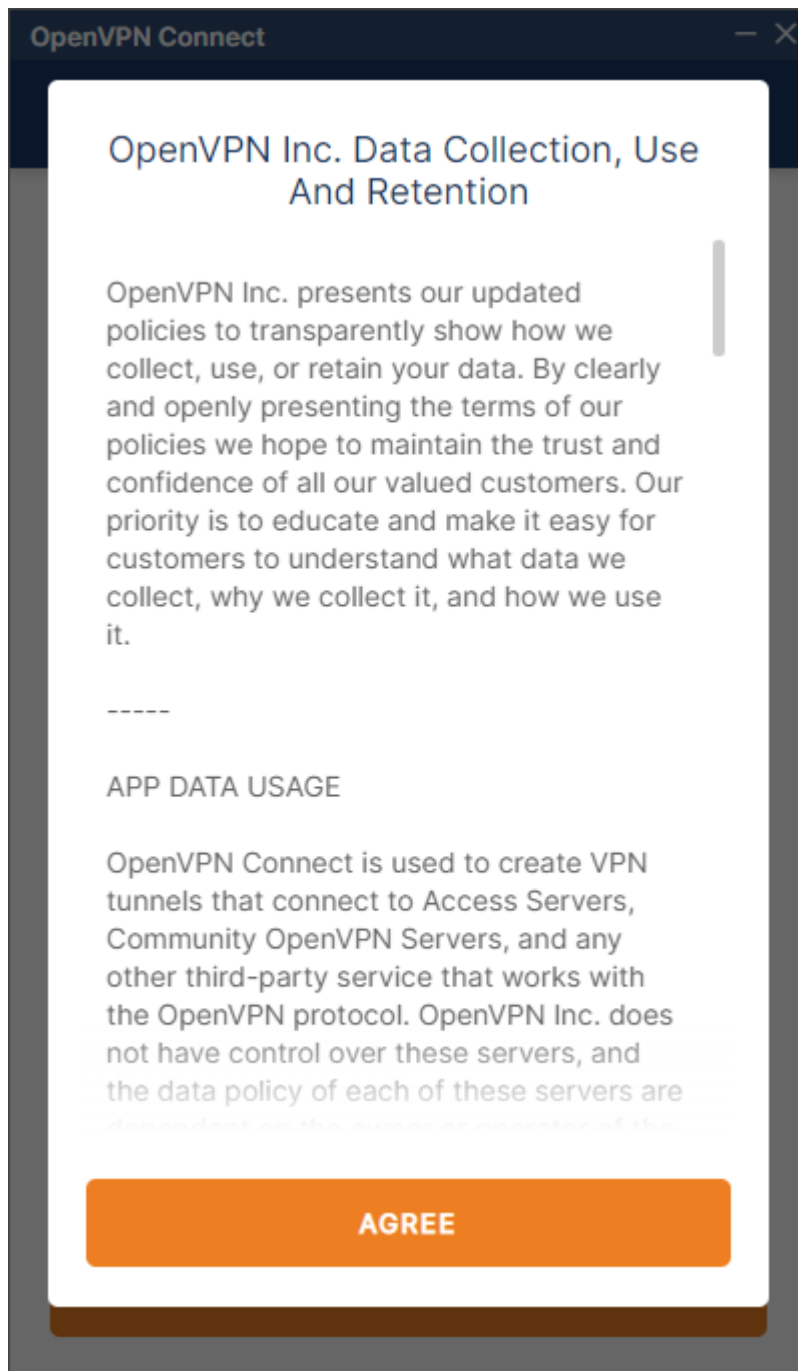


Accept the terms of use and follow the installation instructions:

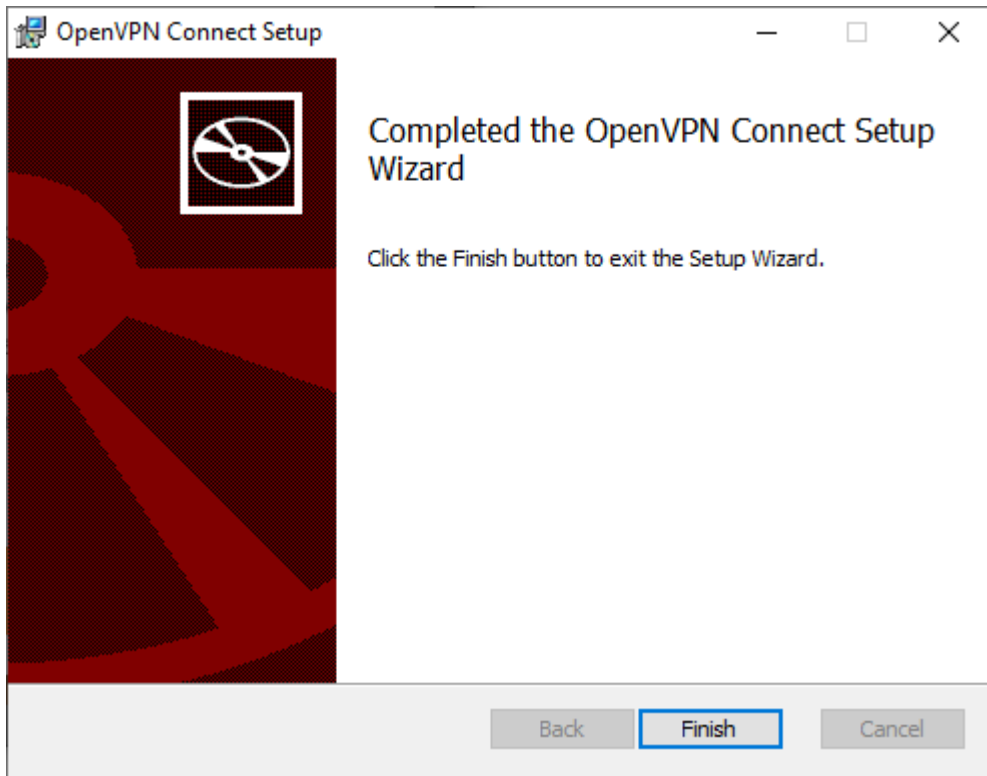




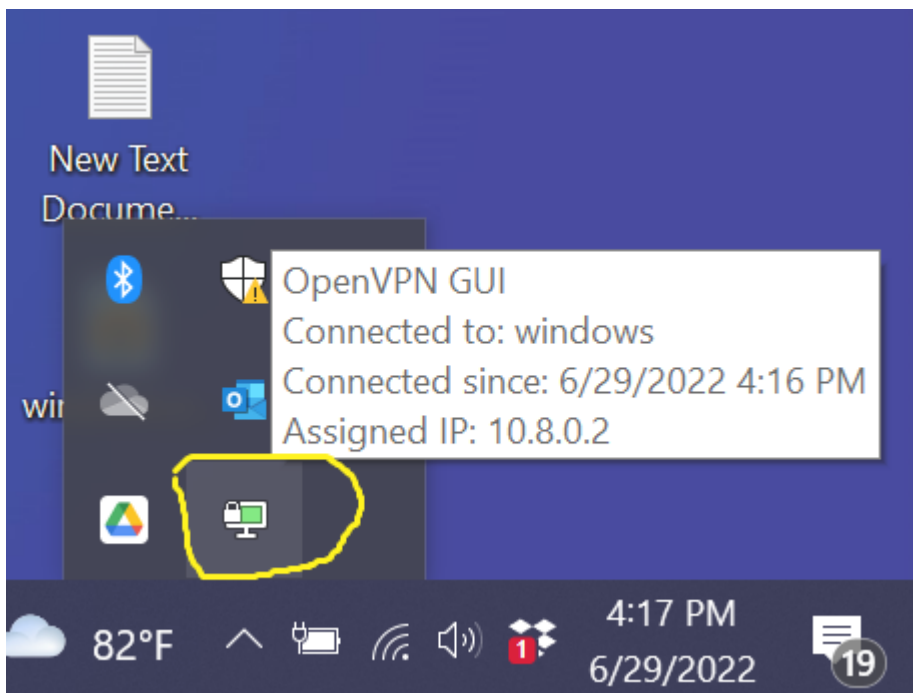
Accept the license



and finish installation.



With this you will already have the OpenVPN client installed on your personal computer.



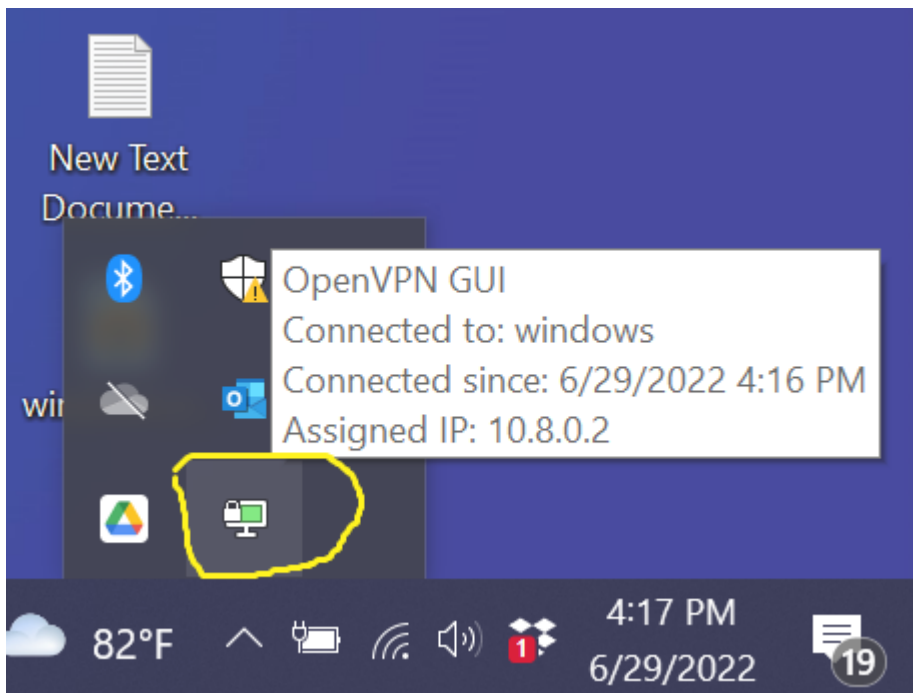
Import VPN connection profile

After receiving the credentials encrypted with your gpg public key and **decrypting** you should all received files in the same directory before importing the configuration, for example:

```
C:\Users\your_user\VPN\  
  
client_teide-XXXX  
├── ca.crt  
├── client.ovpn  
├── README.txt  
├── ta.key  
├── teide-XXXX.crt  
└── teide-XXXX.key
```

Connect to VPN

Look for the OpenVPN client icon in the Windows notification area.



Once the application is open, you can configure the connection manually or the simplest thing is to import the *client.ovpn* file by dragging it, double-clicking on it, or by pressing the *BROWSE* icon



Import Profile

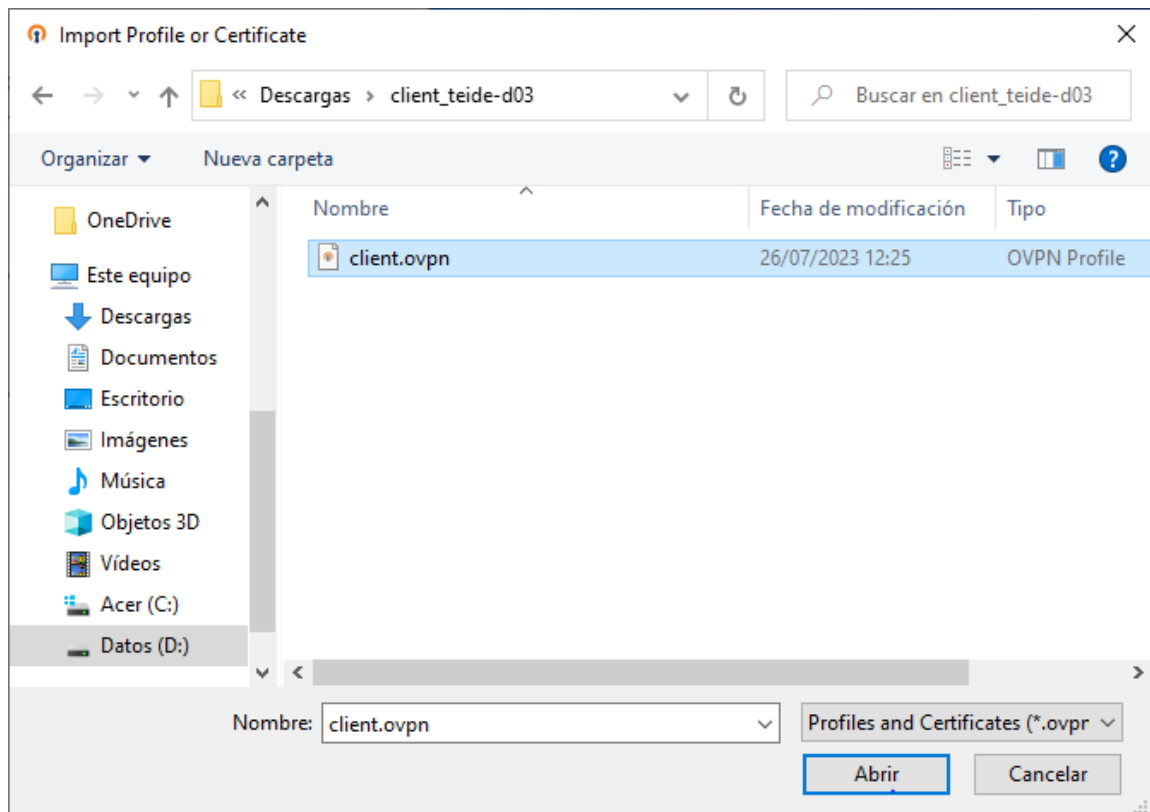
VIA URL

UPLOAD FILE

Drag and drop to upload .OVPN profile.
You can import **only one profile** at a time.



BROWSE



Once the credentials have been entered, the operate systema is ready to access the TeideHPC infrastructure.

OpenVPN Connect


Imported Profile

Profile Name
VPN TeideHPC

Server Hostname (locked)
[REDACTED]

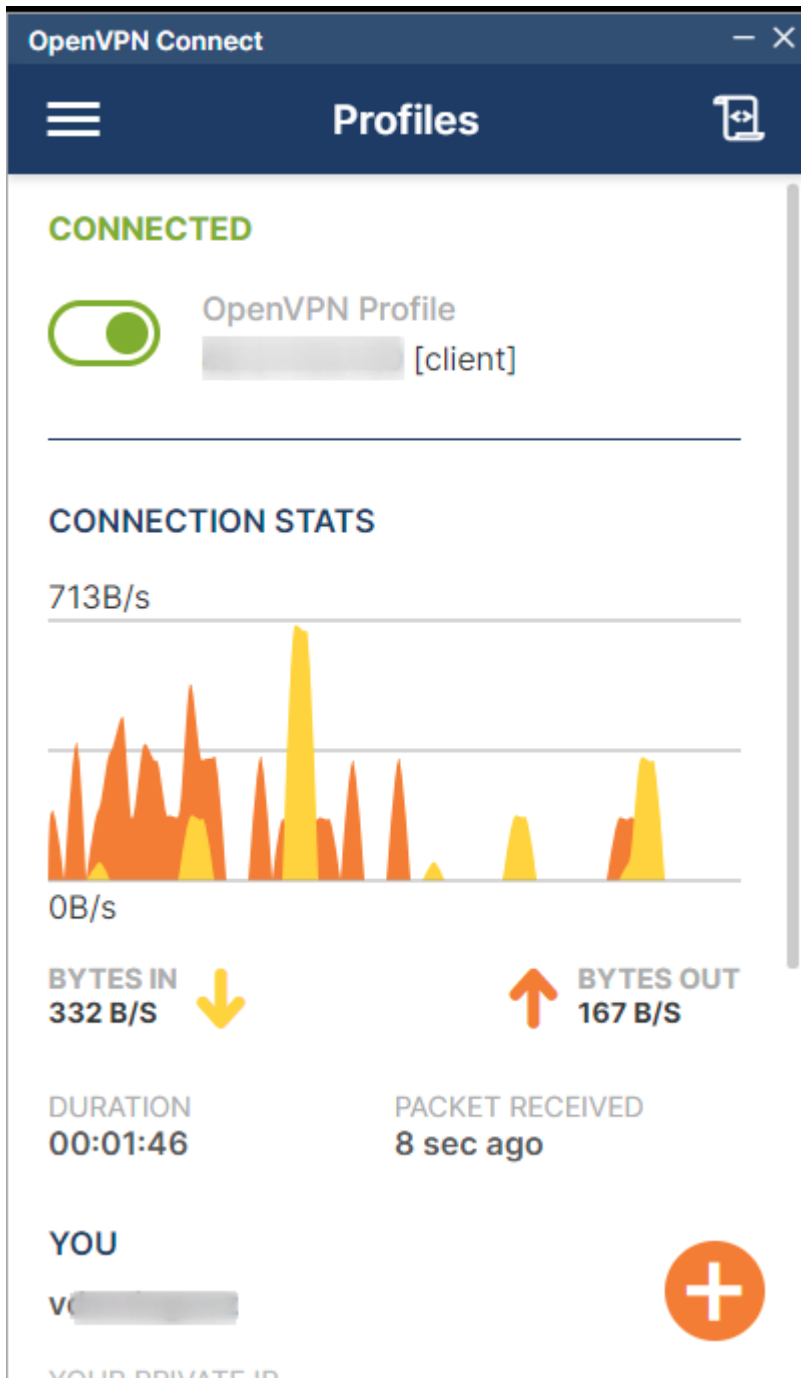
Username
youruser

Save password

Password
[REDACTED] 

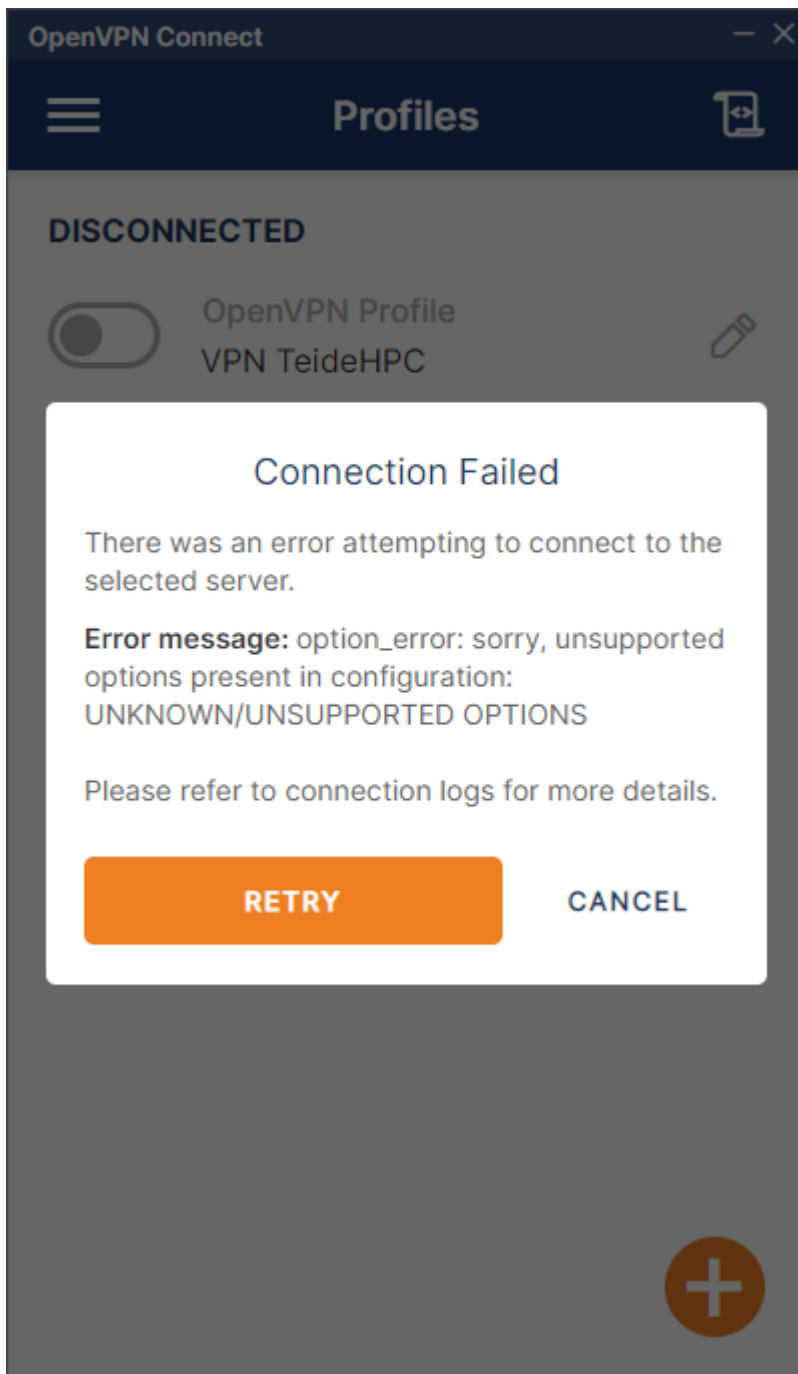
PROFILES **CONNECT**

If your connection is successful you will see the following status on the created connection.

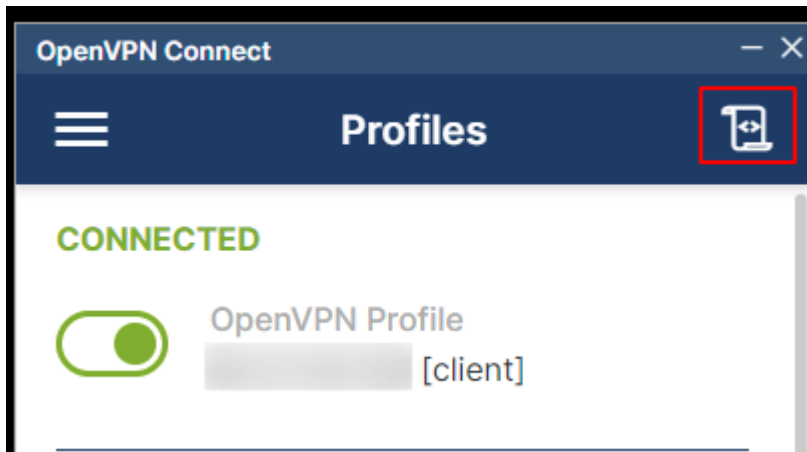


OpenVPN logs for Windows clients.

If there is a problem with the connection to the infrastructure, it is important to check the connection log.



If the connection is not successful, it will always contain the error information.



In case you cannot solve the problem yourself, we will always ask you for the full log, which you can export by clicking on the envelope.



Log File



Configuración IP de Windows
Se vació correctamente la caché de resolución de DNS.
TAP: ARP flush succeeded
TAP handle: 7c16000000000000

[Jul 28, 2023, 11:43:29] Connected via TUN_WIN

[Jul 28, 2023, 11:43:29] LZ4v2 init asym=1

[Jul 28, 2023, 11:43:29] EVENT: CONNECTED
[redacted]@ [redacted]
(46.27.145.130) via /TCP on
TUN_WIN/[redacted] / gw=[redacted] mtu=
(default)

[Jul 28, 2023, 11:43:29] EVENT:
COMPRESSION_ENABLED Asymmetric
compression enabled. Server may send
compressed data. This may be a potential
security issue.

PAUSE